



**REGIONAL SPECIALISED METEOROLOGICAL CENTRE-TROPICAL CYCLONES, NEW DELHI
SPECIAL TROPICAL WEATHER OUTLOOK**

DEMS-RSMC SPECIAL TROPICAL CYCLONES NEW DELHI DATED 19.06.2023

SPECIAL TROPICAL WEATHER OUTLOOK FOR NORTH INDIAN OCEAN (THE BAY OF BENGAL AND THE ARABIAN SEA) VALID FOR NEXT 120 HOURS ISSUED AT 0300 UTC OF 19.06.2023 BASED ON 0000 UTC OF 19.06.2023.

DEPRESSION (REMNANT OF CYCLONIC STORM 'BIPARJOY') OVER CENTRAL PARTS OF EAST RAJASTHAN AND NEIGHBOURHOOD

THE DEPRESSION (REMNANT OF CYCLONIC STORM 'BIPARJOY') OVER CENTRAL PARTS OF EAST RAJASTHAN AND NEIGHBOURHOOD MOVED NEARLY EASTWARDS WITH A SPEED OF 13 KMPH DURING PAST 6-HOURS, AND LAY CENTERED AT 0000 UTC OF 19TH JUNE, 2023 OVER THE SAME REGION NEAR LATITUDE 26.3°N AND LONGITUDE 76.0°E, ABOUT 30 KM EAST-NORTHWEAST OF TONK AND 60 KM SOUTH-SOUTHEAST OF JAIPUR.

IT IS VERY LIKELY TO CONTINUE TO MOVE NEARLY EAST-NORTHEASTWARDS AND MAINTAIN ITS INTENSITY OF DEPRESSION DURING NEXT 06 HOURS.

AS PER INSAT 3D IMAGERY, ASSOCIATED SCATTERED BROKEN LOW/MEDIUM CLOUDS WITH EMBEDDED INTENSE TO VERY INTENSE CONVECTION LAY OVER EAST RAJASTHAN AND MINIMUM CLOUD TOP TEMPERATURE IS MINUS 70°C. BROKEN LOW/MEDIUM CLOUDS WITH EMBEDDED MODERATE TO INTENSE CONVECTION LAY OVER WEST MADHYA PRADESH MINIMUM CLOUD TOP TEMPERATURE IS MINUS 50°C.

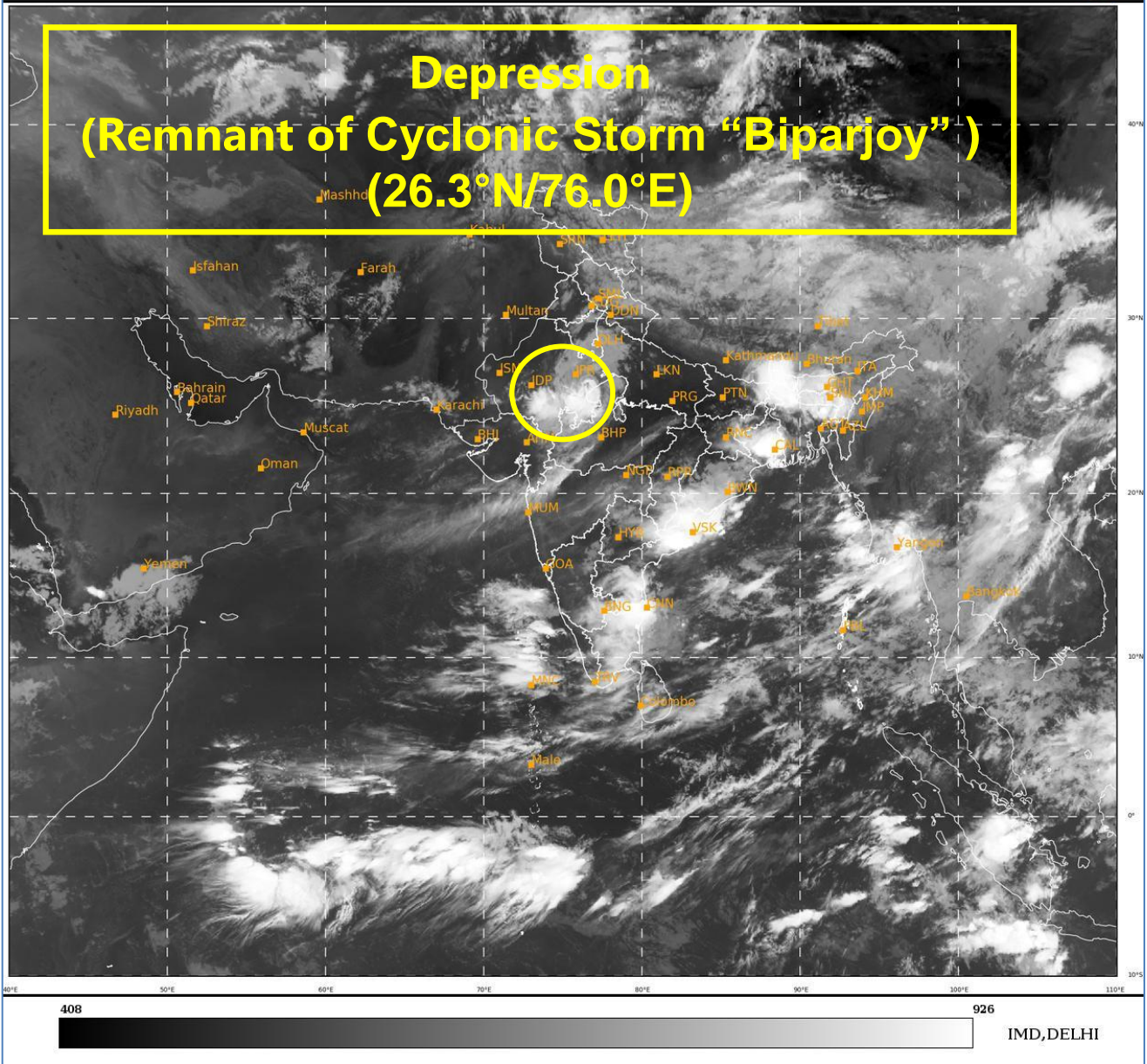
ASSOCIATED MAXIMUM SUSTAINED WIND SPEED (MSW) IS 20 KNOTS GUSTING TO 30 KNOTS. THE ESTIMATED CENTRAL PRESSURE IS 994 HPA.

REMARKS:

THE LOW LEVEL VORTICITY IS AROUND $200 \times 10^{-6} \text{S}^{-1}$ & IS LOCATED AROUND THE SYSTEM CENTRE. LOW LEVEL CONVERGENCE IS ABOUT $20 \times 10^{-5} \text{S}^{-1}$ AROUND THE SYSTEM CENTRE AND UPPER LEVEL DIVERGENCE IS ABOUT $20 \times 10^{-5} \text{S}^{-1}$ TO THE SOUTHWEST OF THE SYSTEM CENTER. VERTICAL WIND SHEAR IS MODERATE TO STRONG (20-25 KNOTS) OVER THE SYSTEM AREA.

BASED ON ENVIRONMENTAL CONDITIONS AND NWP MULTI-MODEL FORECASTS UPDATES, THE SYSTEM IS VERY LIKELY TO CONTINUE TO MOVE NEARLY EAST-NORTHEASTWARDS AND MAINTAIN ITS INTENSITY OF DEPRESSION DURING NEXT 06 HOURS.

**RK JENAMANI
SC-G
RSMC DELHI**



Cloud distribution: (a) Isolated: <25%, Scattered:25-50%, Broken: 51-75%, Solid:>75%, Convection Intensity: (a) Weak: Cloud Top Temperature (CTT) >-25°C, (b) Moderate: CTT: - 25°C to -40°C, (c) Intense: CTT: - 41°C to -70°C and (d) Very Intense: : Less than -70°C
PROBABILITY OF CYCLOGENESIS (FORMATION OF DEPRESSION):NIL: 0%, LOW: 1-33%, , MODERATE: 34-66% AND HIGH: 67-100%
This is a guidance Bulletin for WMO/ESCAP Panel Member countries. Visit respective National websites for Country specific Bulletins



OBSERVED AND FORECAST TRACK OF DEPRESSION (REMANANT OF CYCLONIC STORM BIPARJOY) OVER CENTRAL PARTS OF EAST RAJASTHAN AND NEIGHBOURHOOD BASED ON 0000 UTC (0530 IST) OF 19TH JUNE 2023.



DATE/TIME IN UTC
IST=UTC + 0530

- L: LOW PRESSURE AREA
- WML: WELL MARKED LOW PRESSURE AREA
- D: DEPRESSION (17-27 KT)
- DD: DEEP DEPRESSION (28-33 KT)
- CS: CYCLONIC STORM (34-47 KT)
- SCS: SEVERE CYCLONIC STORM (48-63KT)
- VSCS: VERY SEVERE CYCLONIC STORM (64-89 KT)
- ESCS: EXTREMELY SEVERE CYCLONIC STORM (90-119 KT)
- SuCS: SUPER CYCLONIC STORM (\geq 120 KT)

- LESS THAN 34 KT
- 34-47 KT
- \geq 48 KT
- OBSERVED TRACK
- FORECAST TRACK
- CONE OF UNCERTAINTY